

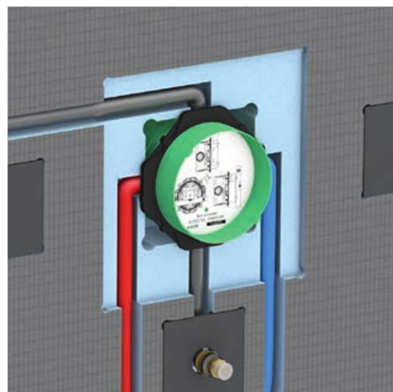
wedi celebrates 40 years – with new innovations for creative bathrooms at BAU 2023



www.wedi.net/wedi/pressemitteilungen/BAU23



Shaped by core principles such as sustainable production with a high percentage of recycling or time-saving installation for the last 40 years, wedi's product range is enhanced by new colour and design accents. Combining creative design with durable and functional solutions, wedi expands its range just in time for BAU. wedi's vision of the bathroom of the future will be presented on a 150 m² island stand in Hall A 4 (No. 321).



Schedules at construction sites are tight, and staffing levels in many companies are low. The new Sanwell shower module is an ideal solution to this problem: cold and hot water pipes, as all other connections and the Hansgrohe iBox are integrated inside the module. The entire system is completely waterproof when delivered.

wedi celebrates 40 years – with new innovations for creative bathrooms at BAU 2023



www.wedi.net/wedi/pressemitteilungen/BAU23



The wedi Sanwell Top LED niche also convinces with its time-saving "Plug & Play" technology. Milling, fastening, bonding, sealing and other preliminary work are completely eliminated. The integrated custom-fit LED light strip provides a pleasantly warm light.

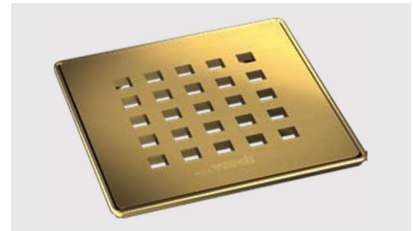
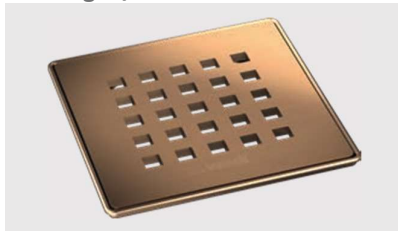


Bathroom renovations and refurbishments are becoming increasingly important for many craft businesses. However, especially in old buildings, the existing substrate is timber. The floor-level Fundo Ligno Plus shower element provides much needed assurance for such installations. Thanks to its low installation height of 23 mm, it can be quickly and easily integrated into the suspended timber floor.

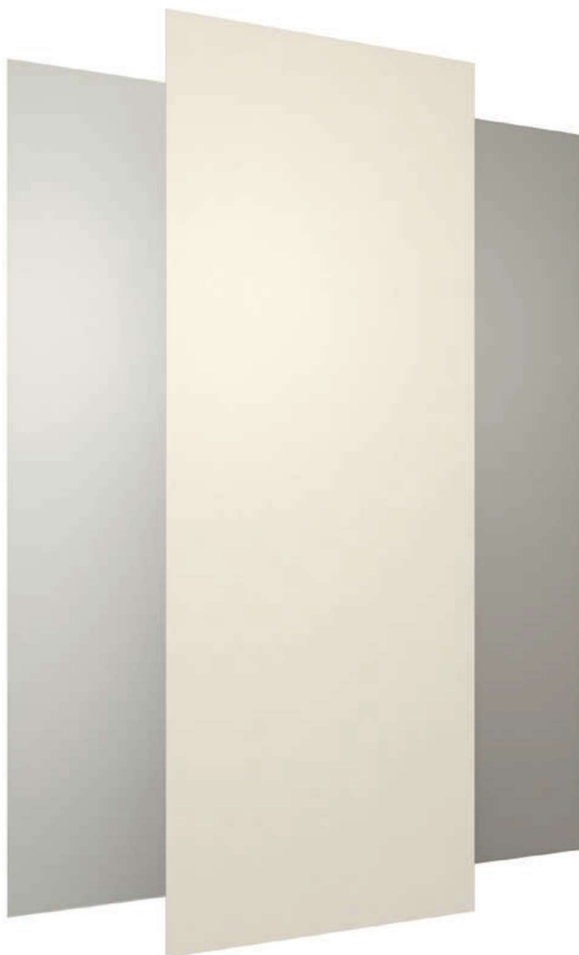
wedi celebrates 40 years – with new innovations for creative bathrooms at BAU 2023



www.wedi.net/wedi/pressemitteilungen/BAU23



Colour accents are becoming more and more important in the design of bathrooms and showers. wedi is helping to shape this trend: among other things, with new **drain covers** in "metallic black", "metallic rose-gold" and "metallic gold". The colours are matched to common fittings from leading brassware manufacturers.



Joint-free shower and bathroom walls are also on trend – as is the desire for sustainable solutions. What could be more obvious than satisfying both requirements with one product? Three new designs made 100 % of mineral materials are now available for the **wedi Top Wall**. The integrated "flakes" are made entirely of recycled material.