

## Fundo Flex: wedi presents a flexible design solution for flush-to-floor showers



Photos to download



From February, wedi will be offering an entirely new concept for flush-to-floor showers. The Fundo Flex combines maximum flexibility with remarkable design, sophisticated technology and a high standard of hygiene. It fits any requirement and allows for exacting, modern design. The new shower solution is celebrating its "premiere" at BAU 2025.

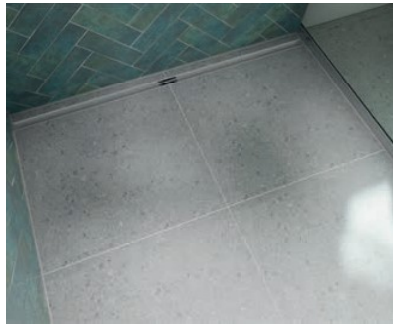
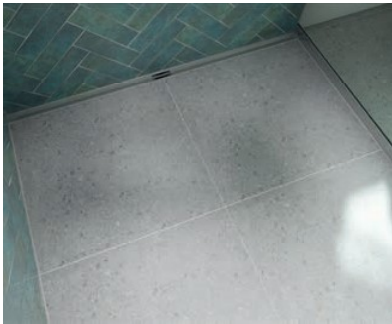
The Fundo Flex was developed to help designers and installers overcome common challenges during planning and execution of floor-level showers. The new linear shower solution is extremely versatile that makes it suitable for any substrate and layout including bathroom renovations on timber.



## Fundo Flex: wedi presents a flexible design solution for flush-to-floor showers



Photos to download



The main reason why the Fundo Flex is so adaptable lies in its customisable channel element and profile; both can be easily cut to size on site and can thus be adjusted to fit any shower. Added bonus: the shower channel can be installed virtually anywhere – by the wall, in the centre or anywhere in between.



During development, wedi placed a lot of emphasis on the design. As well as the high-quality material and low construction height, purist design was also taken into account: the only visible part of the new shower solution, the channel profile is incredibly narrow - just 35 mm wide!

## Fundo Flex: wedi presents a flexible design solution for flush-to-floor showers



Photos to download



The Fundo Flex with its modular design is suitable for installation in or on screed and suspended timber floors. The system consists of a shower channel element with profile, a drain and different sloping boards to suit. The core of the system of course, is the Fundo Flex channel element with stepped rebates on either side ensuring a secure connection between the channel element and the sloping board(s).



Hygiene is also ensured: thanks to its special contour without any edges inside, the drain body with its gooseneck is almost self-cleaning. Integrated within the channel profile, the removable trap catches hair and other debris making the cleaning effortless.